



To access the electronic user manual use the corresponding QR code or link below

Language 



ABOUT US NEWS SCANNERS BIO DETECTION ODM IR CONTACT US

FEATURES SPECIFICATIONS **DOWNLOADS**

If there are any issues regarding the download, please refer to the following link:

[How to Download software from Scanace Website.pdf](#)

Manual [Download](#)

Troubleshooting [Downloads](#)

Driver for Mac OS 10.7 or higher [Download](#)

Driver for Windows 10 32 & 64 bit [Download](#)

Firmware Update [Download](#)

<https://www.scanace.com>



Follow us on Facebook



<https://www.facebook.com/Pacific-Image-Electronics-395587123830570/>

Quick Reference (English)

Getting Started - For detailed use instructions refer to User's Manual from the QR/Link above

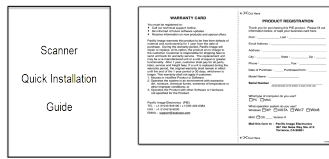
Package Contents

Scanner

Power supply USB 2.0 Cable

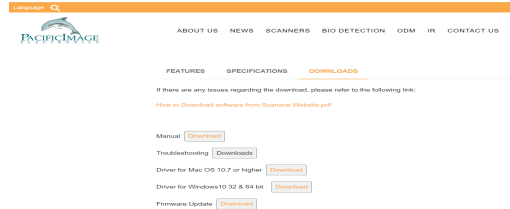


Quick Install Guide
Warranty/Registration Card



PC - Software installation

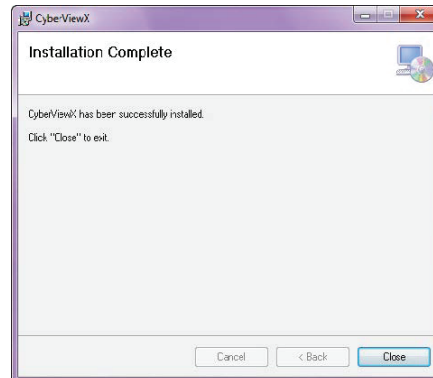
CyberView X5 Scanning Application - Download the software on our official website: <http://www.scanace.com/>
<https://www.scanace.com/>



Locate the downloaded file: Generally this is in the Downloads folder Double click CVX5 Installer - Select **Yes** to allow the installer to run, Select **Next** to continue...

Continue to follow onscreen prompts to complete installation

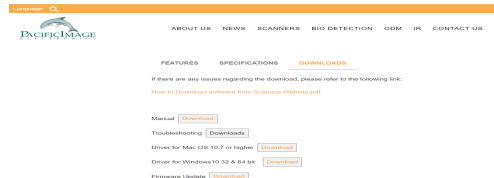
Installation Completed - Click **Close**



MAC - Software Installation

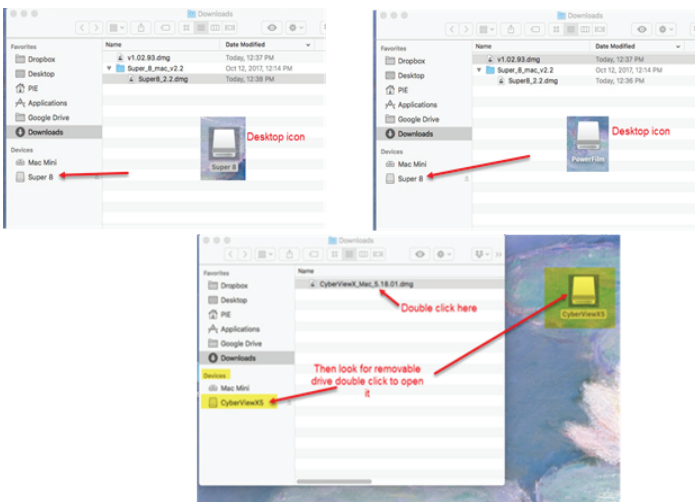
CyberView X5 Scanning Application - Download the software on our official website:

<https://www.scanace.com/>



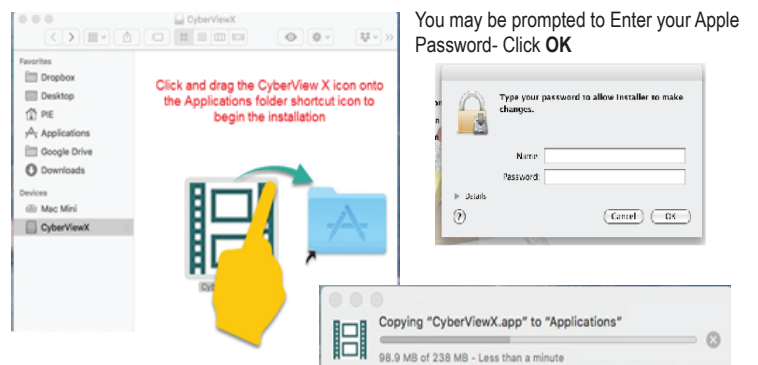
Locate the downloaded file: Generally this is in the Downloads folder Double click CVX5 Installer

It will blink briefly then look on your **Desktop** or in the **Devices list** in the downloads folder for a Removable CyberViewX drive icon

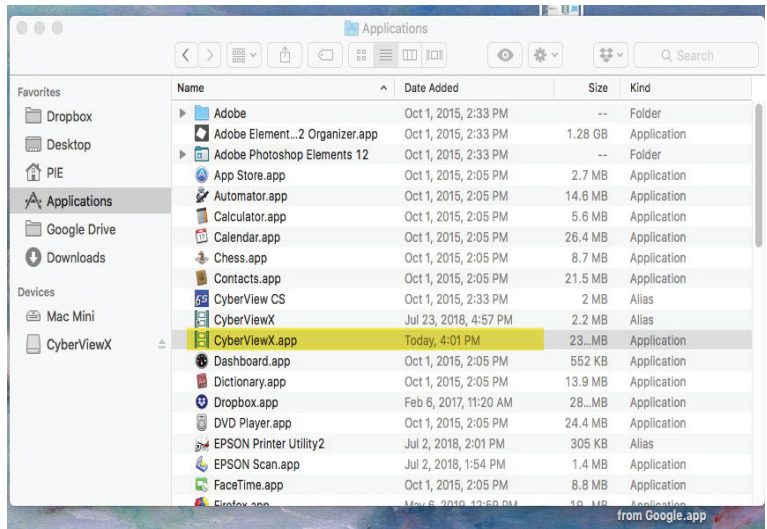
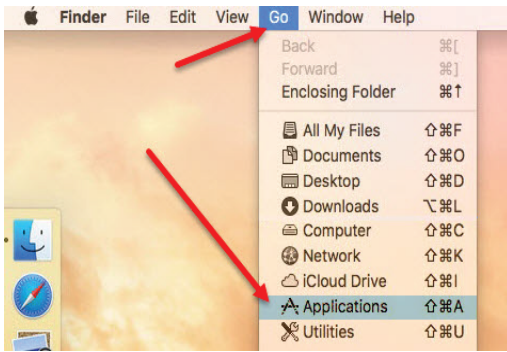


Double click to open this drive, inside there are 2 icons an app installer icon and a shortcut to your Applications folder

Click and drag the app installer, CyberView X.app icon onto the Applications shortcut folder to begin the install



Once completed go to the Applications folder (from the Apple menu click on GO - APPLICATIONS) and locate the CyberView app



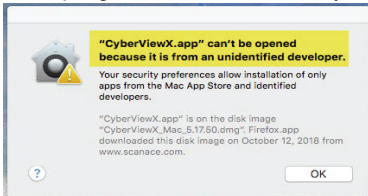
OPTIONAL - SilverFast SE Software installation instructions - **SELECT MODELS ONLY**

To register the SilverFast and get your serial number - Follow the directions provided on the SilverFast Leaflet

NOTE: Cyberview X5 MUST be installed prior to loading SilverFast SE Software

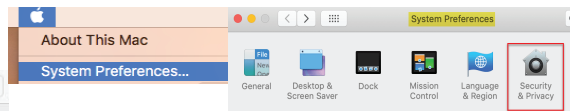
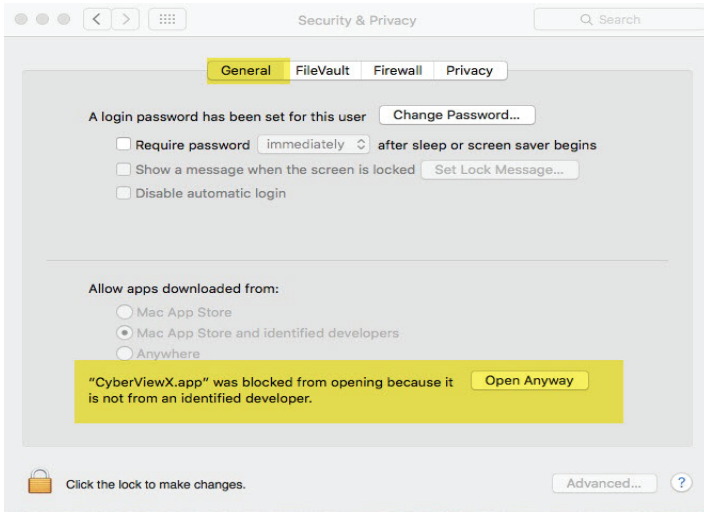
Troubleshooting Installation on the Mac

Apple has implemented security measures to block apps not downloaded from the app store, if you receive a warning when attempting to install the software, you will need to manually allow it for the system to accept the installation



After trying to run the installer you received the above warning

Go to System Preferences (Apple icon – System Preferences- Security and privacy the General Tab, under the Allow Apps downloaded from look for the message XXXX was blocked, and click OPEN ANYWAY to allow it to run



At this point the installer should open and install if it does not you will be required to go to Downloads again and double click the installer icon again and allow it to run then follow the steps above to proceed

Connecting the scanner

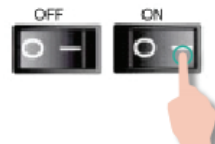
When connecting to a Desktop PC, this device requires a rear USB port connection only, if using a laptop you can use any port directly on the laptop, Connections using a HUB (USB hub is a device that expands a single USB port into several ports), Front USB ports, Monitor USB ports and Laptop Docks are NOT supported, also please be sure to turn off any other conflicting devices: USB connected printer/scanner combo units and flat-bed scanners. When using USB 3.0, USB-C (mini port), it may be necessary, if the scanner hangs on calibrating or freezes mid-scan, using a USB hub may be required.

NOTE: Using a USB cable extension, or longer USB cables are also not supported.

Power on the scanner

Connect the slide scanner to a power source.

Locate the power switch on the lower left side of the scanner. Make sure the scanner is TURNED OFF. Plug the AC adapter into an AC power source FIRST before plugging it into the scanner.



The power up cycle will take approximately 3-5 minutes, at which time the scanning arm will move in and out and the light will blink at different intervals, when the scanner is ready to use the green light will be on solid, you are now ready to insert a tray for scanning..Please refer to the user's manual HOW TO SCAN Section for setting up the scanning procedure.